


# **JOINT MONITORING AND EVALUATION AS A TOOL OF CITIZEN PARTICIPATION IN LSG**

**Daniyar KAINAZAROV**  
**Head of aiyl okmotu of Alexandrov AO**

# COLLABORATION WITH THE “VOICE OF CITIZENS AND ACCOUNTABILITY OF LSG: BUDGETARY PROCESS” PROJECT FUNDED BY THE GOVERNMENT OF SWITZERLAND AND IMPLEMENTED BY THE DEVELOPMENT POLICY INSTITUTE

Collaboration with the Project since \_\_\_\_\_:

- Knowledge of the LSG system
  - Knowledge of the rights and opportunities for citizens to participate in LSG
  - Knowledge of the theory of monitoring and evaluation
  - Information: Model regulation on joint monitoring and evaluation groups
  - Information and technical support for the JM&E team
  - Exchange of information and experience with colleagues from other AOs of KR on the work of JM&E groups
- 

# WHAT WAS THE BASIS FOR CREATING THE JOINT MONITORING AND EVALUATION TEAM?

- Constitution of KR, dated April 11, 2021.
- Budget Code of KR, dated May 16, 2016.
- Laws of the KR:
  - On local state administration and local self-government bodies, dated October 20, 2021.
- Charter of local community
- Standard regulation on joint monitoring and evaluation of the local self-government bodies to address local issues with the involvement of citizens and their associations, approved by the Order of SALSGIR under the Government of KR, dated September 5, 2019, № 01-18/84.




# HOW DID WE PUT IT INTO PRACTICE?

- The JM&E group for the territory of Alexandrov aiyl aimak was established on February 19, 2016 and approved by the resolution of the Alexandrov aiyl kenesh.
- On August 29, 2017, the resolution of the session of the Alexandrov aiyl kenesh made changes and additions to the composition of the JM&E group. The group consisted of 15 initiative, active leaders: employees of aiyl okmotu, AK deputies, heads of TOS, chairman of NGO “Shinshu”, a member of the village administration, headmen of two villages.



## WHAT WAS THE BASIS FOR CREATING THE JOINT MONITORING AND EVALUATION TEAM?

- The group was created for long-term strategic work. In forming the group, residents took into account all of their qualities: discipline, fairness, honesty in addressing an issue, properly accepting criticism in their address, punctuality, whether or not they enjoy authority among the villagers, and many qualities for the performance of good community activities.
  - It was also important to form conditions for feedback, receiving from LSG.
  - Asked the AO for a municipality development program.
  - Developed their action plan and for several years have been actively monitoring the work of LSG bodies. In the current period they have monitored the resolution of many issues of local importance.
- 

## ROAD REPAIRS

Graveling of streets in the village Krupskoye - 260,600 soms;

- Michurina Street (length) - 264 m;
- Naberezhnaya Street (length) - 430 m;
- Frunze Street (length) - 445 m.

During the monitoring by the JM&E team, there were no comments



# Renovation of window units at the Y. Shivaza secondary school



In the course of monitoring by the JM&E group, no irregularities were detected.



# LAYING OF PAVING STONES AT THE A. ISMAEV SECONDARY SCHOOL

The JM&E group found a number of violations, such as: some of the edges of paving stones (curb ties) were poorly laid.



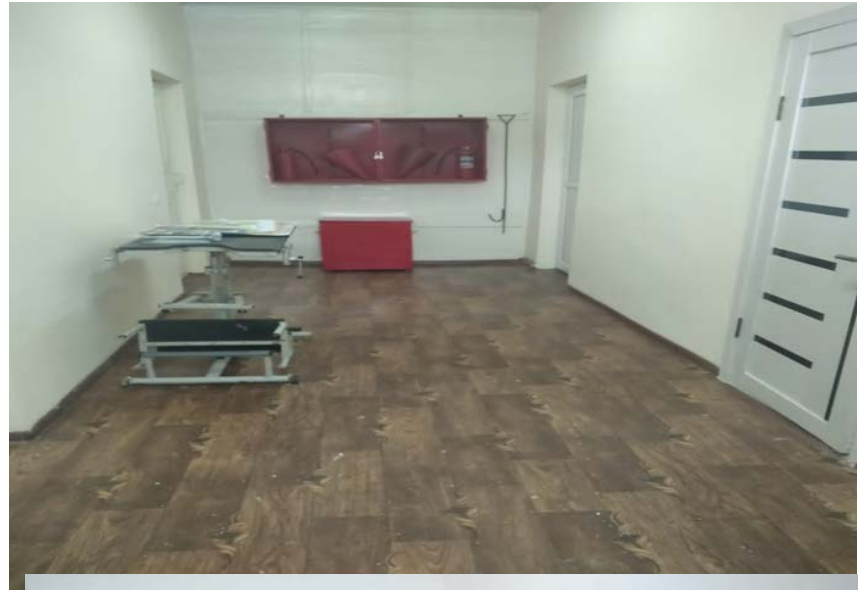
## ROOF REPAIR OF THE A. ARBUDU SECONDARY SCHOOL



When the JM&E team monitored the school, they found that an additional roof repair was needed in another building of the school.



# CURRENT REPAIR OF FMS AND FGP



DURING THE MONITORING THE JM&E GROUP FOUND THAT THE PAINT COLOR DID NOT MEET THE HOSPITAL REQUIREMENTS.



## HOW DID WE PUT IT INTO PRACTICE?

- The JM&E group prepares acts for each violation identified, which are handed over to the LSG body as a recommendation.
- **Reaction of the LSG bodies** is to control the performance of contractors, eliminate violations, require the contractors to meet deadlines and quality of work.
- **Result** - only after the contractor fulfills all the conditions, the LSG body together with the JM&E group and the technical supervision specialist accepts the contractor's work.



## THE RESULT, WHAT HAS CHANGED?

From the first days of JM&E group, aiyl okmotu and deputies, GOOD RELATIONS were built according to the CRITERIA of: fairness, objectivity, common language, openness, not to pursue mercenary goals, not to use the command voice.



# THE RESULT, WHAT HAS CHANGED?

- Timely response to the problems identified by the JM&E group allowed the LSG bodies to eliminate deficiencies and gaps in their work and performance of contractors in the shortest time possible
- Work of LSG bodies became more transparent
- Quality of the LSG work improved
- Public monitoring became one of the most effective forms of citizen participation in local self-governance
- Public trust in the LSG increased

The fact that the LSG body recognizes contributions and benefits made by the JM&E group is evidenced by the fact that the LSG body provided its own municipal transportation for the JM&E outreaches.





**Thank you!**

**Contacts of AO: 03131 6-97-71**

**Website of AO:**

**[www.Aleksandrovka-aimak.kg](http://www.Aleksandrovka-aimak.kg)**

