



ᠮᠤᠩᠭᠤᠯᠢ

# **“Promoting citizen engagement in local budget decision-making by introducing and scaling-up of Local Development Fund (LDF) mobile application”**

Experience from Municipality of Ulaanbaatar, Mongolia

Presenter: Khaliungoo Ganbat (KG) |

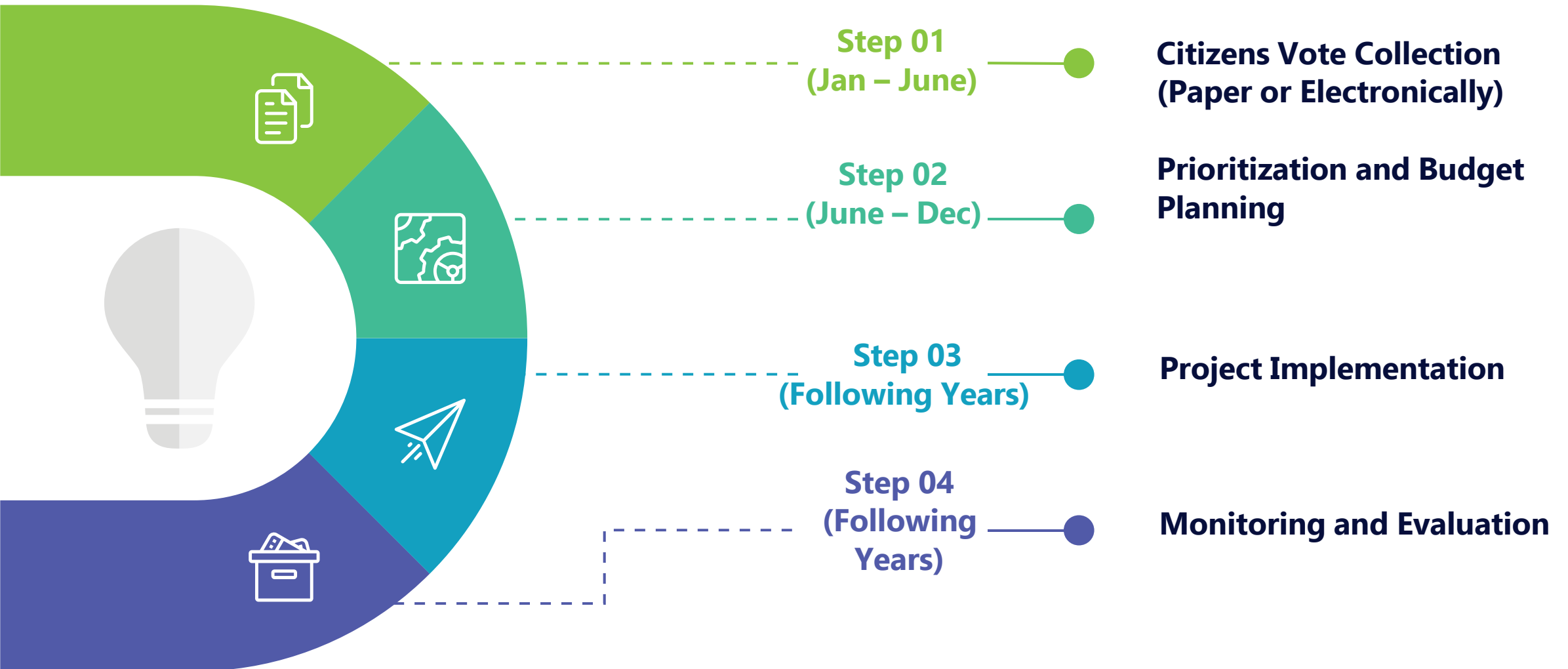
.....

The Local Development Fund (LDF) is the only participatory budget mechanism currently available to citizens to engage directly in infrastructure decisions in their local areas. LDF started in 2014.

- LDF is regulated by:
  - Budget Law of Mongolia.
  - “LDF Guideline” approved by Regulation No.86 of Minister of Finance.

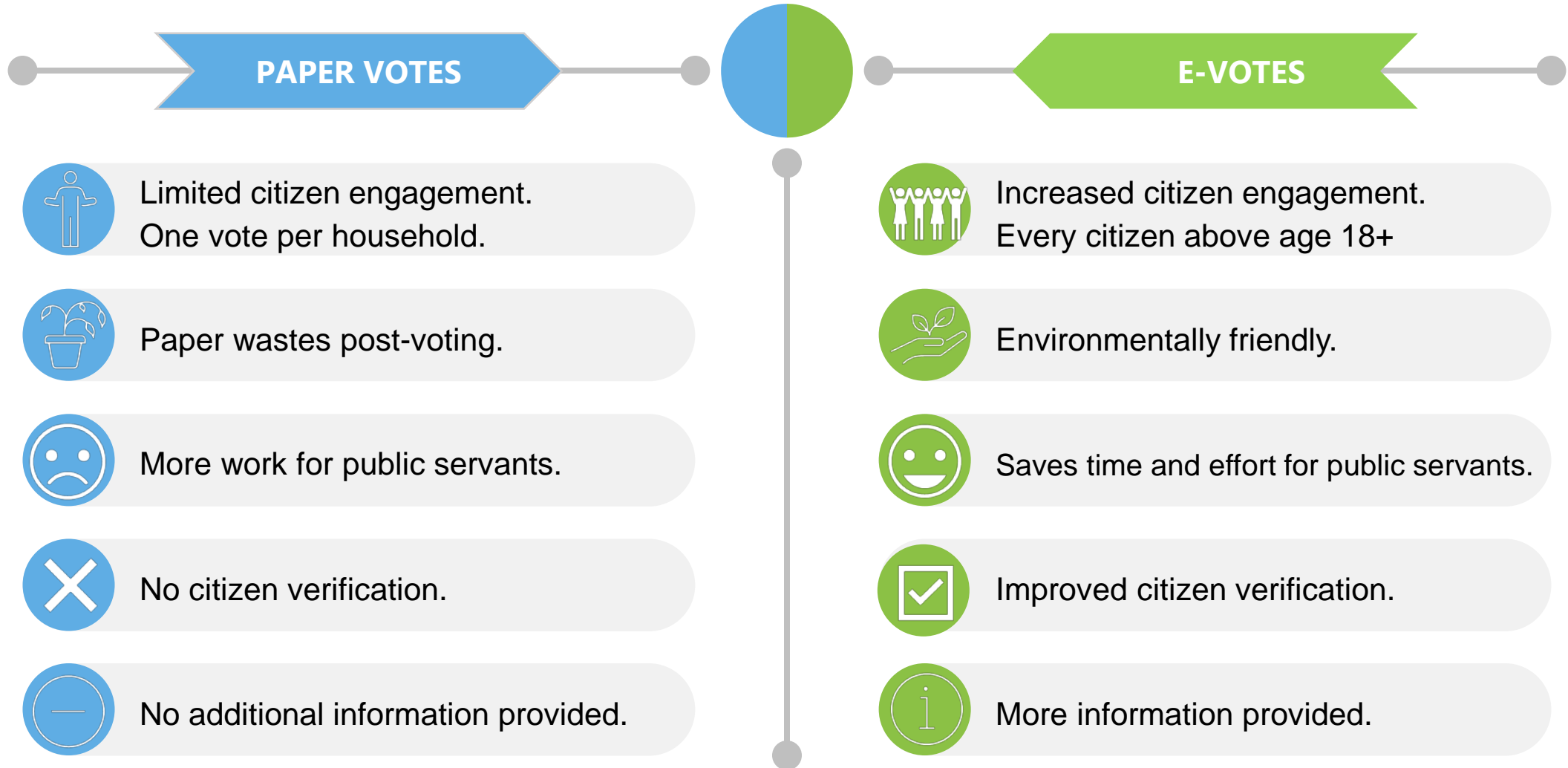


# Local Development Fund Cycle



# Paper VS Electronic

Main differences between paper and electronic votes



# E-GOVERNANCE READINESS SURVEY (2021)

Based on E- government readiness assessment method by World Bank and ICT assessment model by OECD

CITIZENS /UB/ DIGITAL  
READINESS ASSESSMENT

83%

USAGE OF PHONE

96%

ACCESSABILTY

DATA USAGE

80%

CONNECTIVITY

E- SKILL

73%

E-SKILL

**SAMPLE SIZE:**

140 Key Informants Interviews (KIIs)

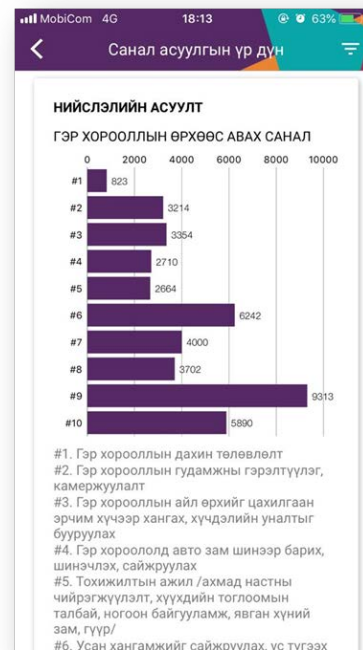
330 citizens – CAPI

104 business entities – CATI

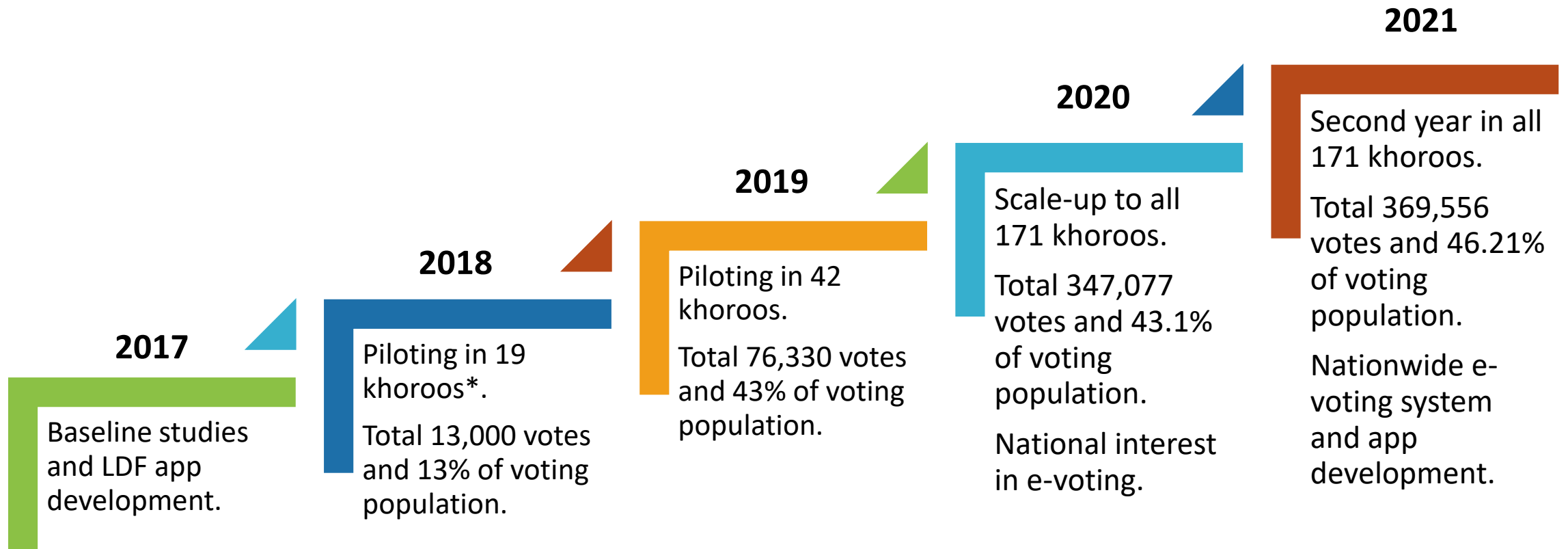
27 participants for 4 FGDs

# SmartUB LDF Mobile Application

1. Download the app.
2. Verify yourself using cell-phone number.
3. Select where you live.
4. Vote on infrastructure projects from pre-entered choices or manually write.
5. Send!

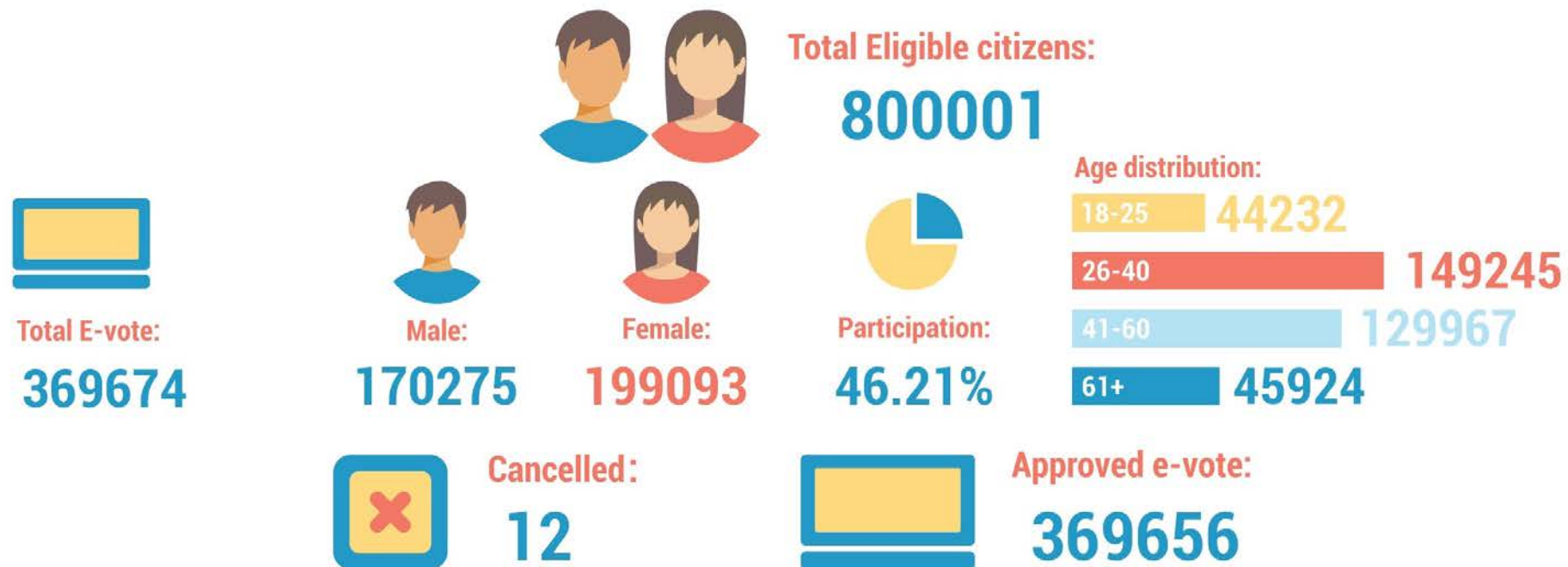


# 2018 & 2019 piloting and 2020 & 2021 scale-up



\*khoroo = smallest administrative unit

## Citizens input application LDF E-voting results for projects to be implemented in 2022



### Are you satisfied with previous year LDF funded investments?



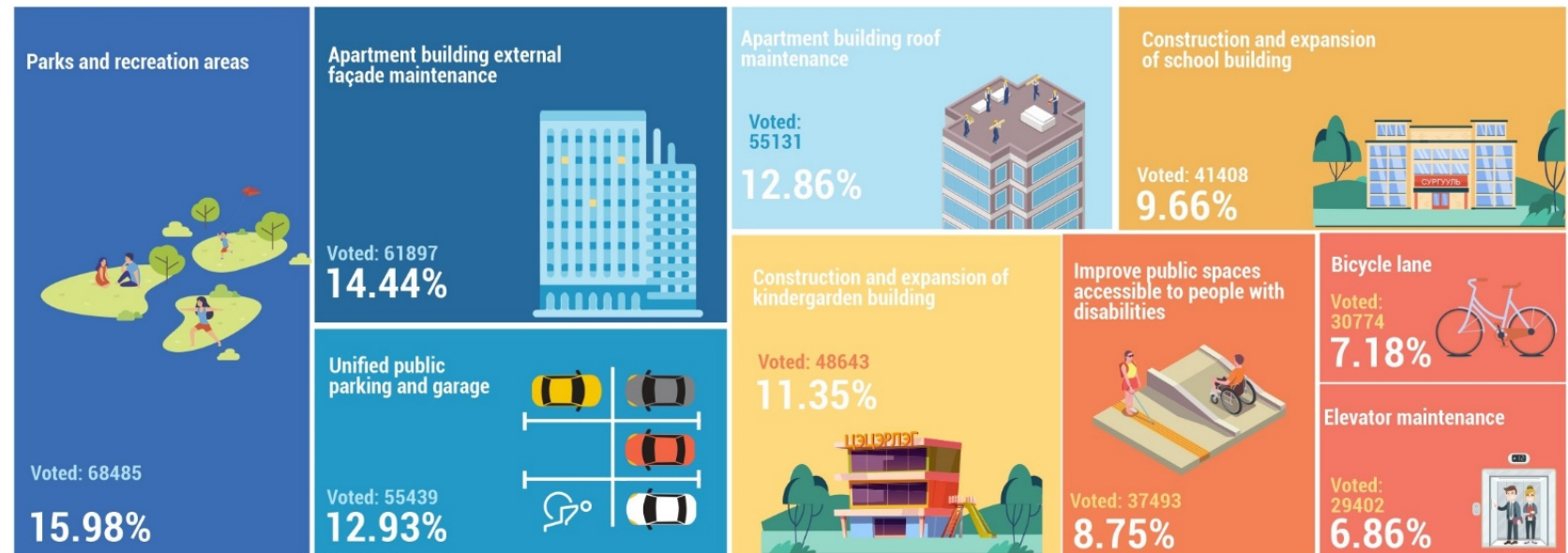


## Local Development Fund investment priorities for ger area residents



Ger area is an unplanned settlement in the outskirts of Ulaanbaatar that is not connected to City's sewage and water systems.

## Local Development Fund investment priorities for Apartment residents



<b>№</b>	<b>Districts</b>	<b>Number of projects selected based on citizen votes</b>	<b>Score (out of 10)</b>
<b>1</b>	<b>Baganuur</b>	<b>6 out of 10</b>	<b>6.000</b>
<b>2</b>	<b>Bagakhangai</b>	<b>5 out of 7</b>	<b>7.1000</b>
<b>3</b>	<b>Bayangol</b>	<b>9 out of 10</b>	<b>9.000</b>
<b>4</b>	<b>Bayanzurkh</b>	<b>Data not provided</b>	<b>0.000</b>
<b>5</b>	<b>Nalaikh</b>	<b>9 out of 16</b>	<b>5.6000</b>
<b>6</b>	<b>Sukhbaatar</b>	<b>7 out of 9</b>	<b>7.8000</b>
<b>7</b>	<b>Songinokhairkhan</b>	<b>54 out of 84</b>	<b>6.4000</b>
<b>8</b>	<b>Khan-Uul</b>	<b>6 out of 6</b>	<b>10.000</b>
<b>9</b>	<b>Chingeltei</b>	<b>17 out of 19</b>	<b>8.9000</b>
<b>Total score</b>			<b>60.8000</b>
<b>Average score</b>			<b>6.8000</b>



Municipality of Ulaanbaatar:  
71 out of 76 projects are based on citizen votes.

**Total score 9.3 out of 10**



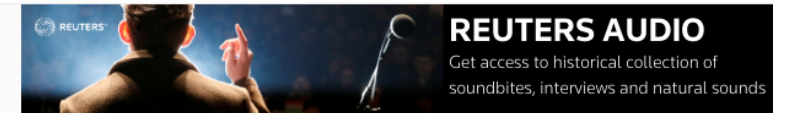
Regional Agenda

## Mongolia's capital is allowing its residents to vote on urban amenities via an app



Those living in apartment buildings voted for green spaces and security cameras.

Image: REUTERS/Thomas Peter



ASIA JUNE 11, 2020 / 4:44 PM / A MONTH AGO

## Streetlights or park? Mongolian residents pick using mobile app

Rina Chandran

4 MIN READ



BANGKOK (Thomson Reuters Foundation) - Residents in the Mongolian capital of Ulaanbaatar have voted on what public amenities they'd like using a mobile app, a new method that authorities may extend to other areas to improve transparency and efficiency, a government official said.

# Challenges:

Cell phone verification still requires involvement of civil servants.

Manually entering address is time consuming and hard to verify.

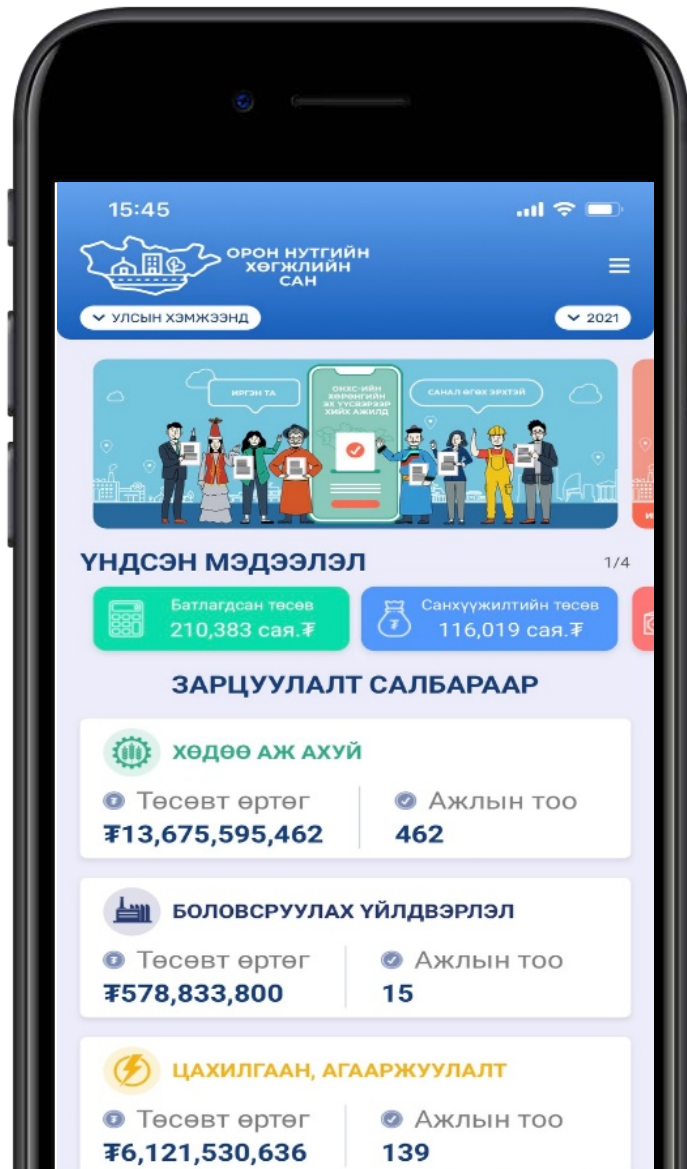
Major investment needed for participation of the elderly, inaccessible and digital illiterate.

Always requires internet connection.

Fast changing technology requires regular updating of system and app.



# Nationwide LDF E-voting Mobile App by Ministry of Finance



Nationwide e-voting.



Connected to national citizen verification system.



Automatically generates home address.



More centralized information on LDF.



Progress status of all LDF cycle is included.



# RECOMMENDATION



## Baseline study

Check if your government and citizens are ready.



## Leadership commitment

Supporting decision makers with required support.



## Plan for piloting before full scale-up

Make sure your system and app is tested and bug free.



## Technology updating

Regular update is required for smooth operation.




## Customer experience

User friendliness and media outreach campaigns.





 Schweizerische Eidgenossenschaft  
Confédération suisse  
Confederazione Svizzera  
Confederaziun svizra

Swiss Agency for Development  
and Cooperation SDC  
Швейцарын хөгжлийн агентлаг



The Asia Foundation

